

Steel square boxes

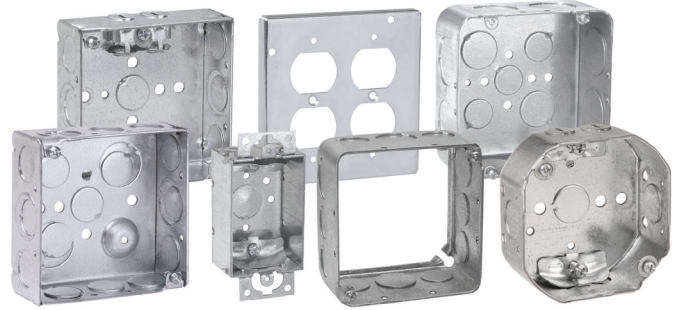
4" SQUARE OUTLET BOXES & COVERS

Applications:

- For use with conduit
- Available in red for fire alarm applications

Features:

- Ideal for exposed work applications, providing an easy method for the installation of electrical devices (switches, receptacles, fans, lights, etc.)
- Raised ground screw location in the welded boxes saves time in installation
- Available with pre-installed ground screws and pigtails for increased labor savings
- Knockouts are suitable for use without a bonding jumper in circuits above or below 250 volts
- Available in two depths for differing cubic capacity requirements
- Welded or drawn construction to match customer preference
- Extensive cover offering to meet various customer applications and needs



Certifications and compliances:

- UL Listed

4" SQUARE OUTLET BOXES – 18.0 CUBIC INCH CAPACITY

1 1/4" DEEP – FOR CONDUIT

UL LISTED



TP408

Steel boxes

Cat. #	Bracket	Description	Grounding method	Knockouts		Unit qty.	Wt. lbs. per 100
				Sides	Bottom		
TP408	-	Drawn	Tapped hole	12 – 1/2"	5 – 1/2"	50	61

Steel square boxes

4" SQUARE OUTLET BOXES – 22.0 CUBIC INCH CAPACITY (WELDED) 21.0 CUBIC INCH CAPACITY (DRAWN)

1 1/2" DEEP – FOR CONDUIT

UL LISTED



TP404/TP404PF



TP404SSB



TP404MSB



TP404RED



TP425



TP469



TP830



TP405



TP412
TP839



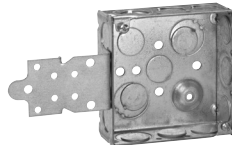
TP410



TP414RED



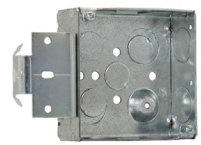
TP414



TP418



TP423RED



TP467MSB

Cat. #	Metal stud sizes	Bracket	Description	Grounding method	Knockouts		Unit qty.	Wt. lbs. per 100
					Sides	Bottom		
TP404	-	-	Welded	Ground bump	8 - 1/2", 4 - 1/2" + 3/4" E	2 - 1/2", 2 - 1/2" + 3/4" E	50	72
TP404G [Ⓞ]	-	-	Welded	Ground bump with screw	8 - 1/2", 4 - 1/2" + 3/4" E	2 - 1/2", 2 - 1/2" + 3/4" E	50	72
TP404MSB	-	MSB	Welded	Ground bump	8 - 1/2", 4 - 1/2" + 3/4" E	2 - 1/2", 2 - 1/2" + 3/4" E	25	83
TP404RED	-	-	Welded	Ground bump	8 - 1/2", 4 - 1/2" + 3/4" E	2 - 1/2", 2 - 1/2" + 3/4" E	50	72
TP404REDMSB	-	MSB	Welded	Ground bump	8 - 1/2", 4 - 1/2" + 3/4" E	2 - 1/2", 2 - 1/2" + 3/4" E	25	83
TP404PF [Ⓞ] [ⓔ]	-	-	Welded	Ground bump	8 - 1/2", 4 - 1/2" + 3/4" E	2 - 1/2", 2 - 1/2" + 3/4" E	50	72
TP404SSB	-	SSB	Welded	Ground bump	8 - 1/2", 4 - 1/2" + 3/4" E	2 - 1/2", 2 - 1/2" + 3/4" E	50	83
TP425	All	"VP"	Welded	Ground bump	6 - 1/2", 3 - 1/2" + 3/4" E	2 - 1/2", 2 - 1/2" + 3/4" E	25	82
TP425G [Ⓞ]	All	"VP"	Welded	Ground bump with screw	6 - 1/2", 3 - 1/2" + 3/4" E	2 - 1/2", 2 - 1/2" + 3/4" E	25	82
TP423	All	"VMS"	Welded	Ground bump	6 - 1/2", 3 - 1/2" + 3/4" E	2 - 1/2", 2 - 1/2" + 3/4" E	25	81
TP423G [Ⓞ]	All	"VMS"	Welded	Ground bump with screw	6 - 1/2", 3 - 1/2" + 3/4" E	2 - 1/2", 2 - 1/2" + 3/4" E	25	81
TP423RED	All	"VMS"	Welded	Ground bump	6 - 1/2", 3 - 1/2" + 3/4" E	2 - 1/2", 2 - 1/2" + 3/4" E	25	81
TP405	-	-	Drawn	Tapped hole	4 - 1/2", 6 - 1/2" + 3/4" C	3 - 1/2", 2 - 3/4"	50	67
TP410	-	-	Drawn	Tapped hole	12 - 1/2"	5 - 1/2"	50	67
TP412	-	-	Drawn	Tapped hole	8 - 3/4"	3 - 1/2", 2 - 3/4"	50	67
TP414	-	-	Drawn	Ground bump	8 - 1/2", 4 - 3/4"	2 - 1/2", 2 - 3/4"	50	67
TP414G [Ⓞ]	-	-	Drawn	Ground bump with screw	8 - 1/2", 4 - 3/4"	3 - 1/2", 2 - 3/4"	50	67
TP414RED	-	-	Drawn	Ground bump	8 - 1/2", 4 - 3/4"	3 - 1/2", 2 - 3/4"	50	67
TP418	-	"F", set flush	Welded	Ground bump	6 - 1/2", 3 - 1/2" + 3/4" E	2 - 1/2", 2 - 1/2" + 3/4" E	25	84
TP467	-	-	Welded	Ground bump	8 - 3/4"	2 - 1/2", 2 - 1/2" + 3/4" E	50	72
TP467MSB	-	MSB	Welded	Ground bump	8 - 3/4"	2 - 1/2", 2 - 1/2" + 3/4" E	25	78
TP469	All	"VMS"	Welded	Ground bump	6 - 3/4"	2 - 1/2", 2 - 1/2" + 3/4" E	25	81
Air Plenum								
TP830 [Ⓞ]	-	-	Drawn	Tapped screw	8 - 1/2", 4 - 3/4"	3 - 1/2", 2 - 3/4"	50	72
TP839 [Ⓞ]	-	-	Drawn	Tapped screw	8 - 3/4"	3 - 1/2", 2 - 3/4"	50	72

[Ⓞ]For air plenum (no mounting holes) - not UL Listed.

[ⓔ]cUL Listed.

[ⓔ]TP catalog numbers ending in PF include ground screw with pigtail lead.

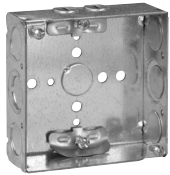
[ⓔ]CSA certified.

Steel boxes

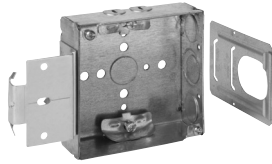
Steel square boxes

4" SQUARE OUTLET BOXES – 22.0 CUBIC INCH CAPACITY

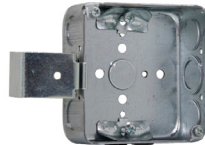
1½" DEEP
FOR NON-METALLIC CABLE – CLAMPS IN EACH END
UL LISTED



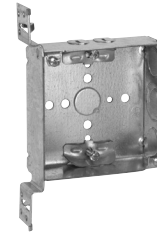
TP444



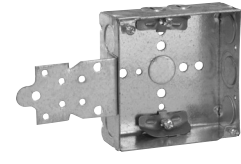
TP444MSB



TP444SSB



TP449



TP446

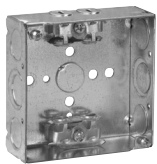
Cat. #	Bracket	Description	Knockouts		Unit qty.	Wt. lbs. per 100
			Sides	Bottom		
TP444	-	Welded	4 - cable, 4 - ½", 2 - ½" + ¾" E	1 - ½"	50	77
TP444MSB	MSB	Welded	4 - cable, 4 - ½", 2 - ½" + ¾" E	1 - ½"	25	81
TP444SSB	SSB	Welded	4 - cable, 4 - ½", 2 - ½" + ¾" E	1 - ½"	50	88
TP446	"F", set flush	Welded	4 - cable, 2 - ½", 1 - ½" + ¾" E	1 - ½"	25	88
TP449	"VMS"	Welded	4 - cable, 2 - ½", 1 - ½" + ¾" E	1 - ½"	25	85
TP449G [Ⓕ]	"VMS"	Welded	4 - Cable, 2 - ½", 1 - ½" + ¾" E	1 - ½"	25	85

[Ⓕ] CSA certified. G indicates ground screw installed.

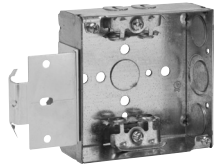
4" SQUARE OUTLET BOXES – 22.0 CUBIC INCH CAPACITY

1½" DEEP
FOR ARMORED & METAL-CLAD (MCI) CABLE & HCF CABLE – CLAMPS IN EACH END
UL LISTED

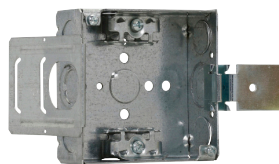
Steel boxes



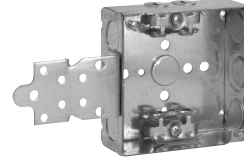
TP454



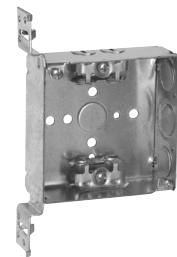
TP454MSB



TP454SSB



TP456



TP459

Cat. #	Bracket	Description	Knockouts		Unit qty.	Wt. lbs. per 100
			Sides	Bottom		
TP459	"VMS"	Welded	4 - cable, 2 - ½", 1 - ½" + ¾" E	1 - ½"	25	89
TP454 [Ⓐ]	-	Welded	4 - cable, 4 - ½", 2 - ½" + ¾" E	1 - ½"	50	81
TP454MSB [Ⓐ]	MSB	Welded	4 - cable, 4 - ½", 2 - ½" + ¾" E	1 - ½"	25	91
TP454G [Ⓐ] [Ⓕ]	-	Welded	4 - Cable, 4 - ½", 2 - ½" + ¾" E	1 - ½"	50	81
TP454PF [Ⓔ]	-	Welded	4 - cable, 4 - ½", 2 - ½" + ¾" E	1 - ½"	50	81
TP454SSB [Ⓐ]	SSB	Welded	4 - cable, 4 - ½", 2 - ½" + ¾" E	1 - ½"	25	82
TP456 [Ⓐ]	"F", set flush	Welded	4 - cable, 2 - ½", 1 - ½" + ¾" E	1 - ½"	25	92
TP456PF [Ⓔ]	"F", set flush	Welded	4 - cable, 2 - ½", 1 - ½" + ¾" E	1 - ½"	25	92

[Ⓐ] UL approved for use with aluminum interlocking grounding metal-clad cable, Type MClA (Southwire MCAP™). MCAP™ is a registered trademark of Southwire Company.

[Ⓔ] TP catalog numbers ending in PF include ground screw with pigtail lead.

[Ⓕ] CSA certified. G indicates ground screw installed.

Steel square boxes

4" SQUARE OUTLET BOXES – 30.3 CUBIC INCH CAPACITY

2 1/8" DEEP – FOR CONDUIT

UL LISTED



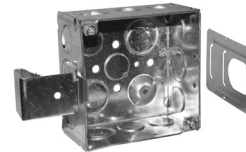
TP403/TP403PF



TP403BH



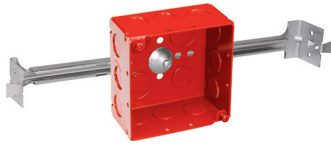
TP403MSB



TP403SSB



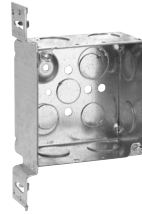
TP403RED



TP403REDBH



TP432



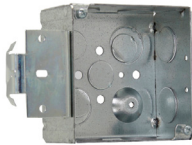
TP432VMS



TP434



TP438/TP831E



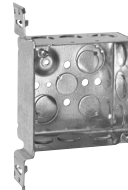
TP432MSB



TP434RED



TP451RED



TP451

Cat. #	Bracket	Description	Grounding method	Knockouts		16" Fixture weight (lbs.)	24" Fixture weight (lbs.)	Unit qty.	Wt. lbs. per 100
				Sides	Bottom				
TP403	-	Welded	Ground bump	8 - 1/2", 4 - 1/2" + 3/4" E	2 - 1/2", 2 - 1/2" + 3/4" E	-	-	25	84
TP403BH	-	Welded	Ground bump	8 - 1/2", 4 - 1/2" + 3/4" E	2 - 1/2", 2 - 1/2" + 3/4" E	50	50	25	84
TP403G [ⓑ]	-	Welded	Grnd bump w/screw	8 - 1/2", 4 - 1/2" + 3/4" E	2 - 1/2", 2 - 1/2" + 3/4" E	-	-	25	84
TP403MSB	MSB	Welded	Ground bump	8 - 1/2", 4 - 1/2" + 3/4" E	2 - 1/2", 2 - 1/2" + 3/4" E	-	-	25	95
TP403RED	-	Welded	Ground bump	8 - 1/2", 4 - 1/2" + 3/4" E	2 - 1/2", 2 - 1/2" + 3/4" E	-	-	25	84
TP403REDBH	-	Welded	Ground bump	8 - 1/2", 4 - 1/2" + 3/4" E	2 - 1/2", 2 - 1/2" + 3/4" E	50	50	25	84
TP403REDBSB	MSB	Welded	Ground bump	8 - 1/2", 4 - 1/2" + 3/4" E	2 - 1/2", 2 - 1/2" + 3/4" E	-	-	25	95
TP403PF [Ⓒ] [Ⓔ] [Ⓕ]	-	Welded	Ground bump	8 - 1/2", 4 - 1/2" + 3/4" E	2 - 1/2", 2 - 1/2" + 3/4" E	-	-	25	84
TP403SSB	SSB	Welded	Ground bump	8 - 1/2", 4 - 1/2" + 3/4" E	2 - 1/2", 2 - 1/2" + 3/4" E	-	-	25	95
TP432	-	Welded	Ground bump	8 - 3/4"	2 - 1/2", 2 - 1/2" + 3/4" E	-	-	25	84
TP432G [Ⓒ]	-	Welded	Grnd bump w/screw	8 - 3/4"	2 - 1/2", 2 - 1/2" + 3/4" E	-	-	25	84
TP432RED	-	Welded	Ground bump	8 - 3/4"	2 - 1/2", 2 - 1/2" + 3/4" E	-	-	25	84
TP432MSB	MSB	Welded	Ground bump	8 - 3/4"	2 - 1/2", 2 - 1/2" + 3/4" E	-	-	25	95
TP432REDBSB	MSB	Welded	Ground bump	8 - 3/4"	2 - 1/2", 2 - 1/2" + 3/4" E	-	-	25	95
TP432VMS	"VMS"	Welded	Ground bump	6 - 3/4"	2 - 1/2", 2 - 1/2" + 3/4" E	-	-	25	99
TP436	-	Welded	Ground bump	8 - 1"	2 - 1/2", 2 - 1/2" + 3/4" E	-	-	25	84
TP436G [Ⓒ]	-	Welded	Grnd bump w/screw	8 - 1"	2 - 1/2", 2 - 1/2" + 3/4" E	-	-	25	84
TP436MSB	MSB	Welded	Ground bump	8 - 1"	2 - 1/2", 2 - 1/2" + 3/4" E	-	-	25	95
TP434	-	Drawn	Ground bump	8 - 1/2", 4 - 3/4"	3 - 1/2", 2 - 3/4"	-	-	25	84
TP434G [Ⓒ]	-	Drawn	Grnd bump w/screw	8 - 1/2", 4 - 3/4"	3 - 1/2", 2 - 3/4"	-	-	25	84
TP434RED	-	Drawn	Ground bump	8 - 1/2", 4 - 3/4"	3 - 1/2", 2 - 3/4"	-	-	25	84
TP438	-	Drawn	Ground bump	4 - 1/2", 6 - 1/2" + 3/4" C	3 - 1/2", 2 - 3/4"	-	-	25	84
TP438G [Ⓒ]	-	Drawn	Grnd bump w/screw	4 - 1/2", 6 - 1/2" + 3/4" C	3 - 1/2", 2 - 3/4"	-	-	25	84
TP438PF [Ⓒ]	-	Drawn	Ground bump	4 - 1/2", 6 - 1/2" + 3/4" C	3 - 1/2", 2 - 3/4"	-	-	25	84
TP451	"VMS"	Welded	Ground bump	6 - 1/2", 3 - 1/2" + 3/4" E	2 - 1/2", 2 - 1/2" + 3/4" E	-	-	25	96
TP451G [Ⓒ]	"VMS"	Welded	Grnd bump w/screw	6 - 1/2", 3 - 1/2" + 3/4" E	2 - 1/2", 2 - 1/2" + 3/4" E	-	-	25	96
TP451PF [Ⓒ]	"VMS"	Welded	Ground bump	6 - 1/2", 3 - 1/2" + 3/4" E	2 - 1/2", 2 - 1/2" + 3/4" E	-	-	25	96
TP451RED	"VMS"	Welded	Ground bump	6 - 1/2", 3 - 1/2" + 3/4" E	2 - 1/2", 2 - 1/2" + 3/4" E	-	-	25	96
TP437	"VP"	Welded	Ground bump	6 - 1/2", 3 - 1/2" + 3/4" E	2 - 1/2", 2 - 1/2" + 3/4" E	-	-	25	98

Steel boxes

Air Plenum

TP831 [Ⓔ]	-	Drawn	Ground bump	8 - 1/2", 4 - 3/4"	3 - 1/2", 2 - 3/4"	-	-	25	90
--------------------	---	-------	-------------	--------------------	--------------------	---	---	----	----

[Ⓔ] For Air Plenum (no mounting holes) - not UL Listed.

[Ⓒ] cUL Listed.

[Ⓔ] TP catalog numbers ending in PF include ground screw with pigtail lead.

[Ⓒ] CSA certified.

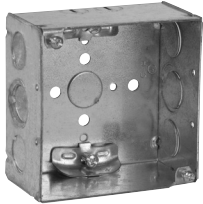
Steel square boxes

4" SQUARE OUTLET BOXES – 30.3 CUBIC INCH CAPACITY

2 1/8" DEEP

FOR NON-METALLIC CABLE – CLAMPS IN EACH END

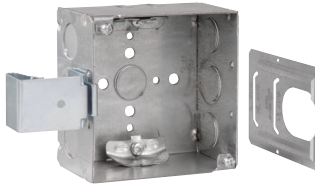
UL LISTED



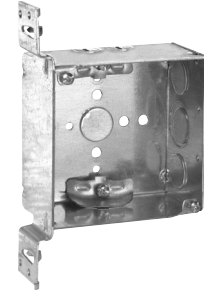
TP450



TP450MSB



TP450SSB



TP452

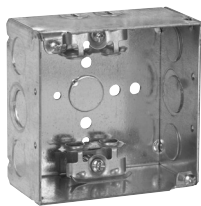
Cat. #	Bracket	Description	Knockouts		Unit qty.	Wt. lbs. per 100
			Sides	Bottom		
TP450	-	Welded	4 - cable, 4 - 1/2", 2 - 1/2" + 3/4" E	1 - 1/2"	25	90
TP450MSB	MSB	Welded	4 - cable, 4 - 1/2", 2 - 1/2" + 3/4" E	1 - 1/2"	25	101
TP450SSB	SSB	Welded	4 - cable, 4 - 1/2", 2 - 1/2" + 3/4" E	1 - 1/2"	25	101
TP452	"VMS"	Welded	4 - cable, 2 - 1/2", 1 - 1/2" + 3/4" E	1 - 1/2"	25	104

4" SQUARE OUTLET BOXES – 30.3 CUBIC INCH CAPACITY

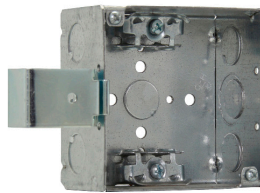
2 1/8" DEEP

FOR ARMORED & METAL-CLAD (MCI) CABLE & HCF CABLE – CLAMPS IN EACH END

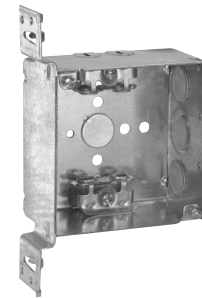
UL LISTED



TP431



TP431SSB



TP440

Cat. #	Metal stud sizes	Bracket	Description	Knockouts		Unit qty.	Wt. lbs. per 100
				Sides	Bottom		
TP431 ^A	-	-	Welded	4 - cable, 4 - 1/2", 2 - 1/2" & 3/4" E	1 - 1/2"	25	91
TP431G ^{A F}	-	-	Welded	4 - cable, 4 - 1/2", 2 - 1/2" & 3/4" E	1 - 1/2"	25	91
TP431PF ^E	-	-	Welded	4 - cable, 4 - 1/2", 2 - 1/2" & 3/4" E	1 - 1/2"	25	91
TP431MSB ^A	-	MSB	Welded	4 - cable, 4 - 1/2", 2 - 1/2" & 3/4" E	1 - 1/2"	25	91
TP431SSB ^A	-	SSB	Welded	4 - cable, 4 - 1/2", 2 - 1/2" & 3/4" E	1 - 1/2"	25	102
TP440 ^A	All	"VMS"	Welded	4 - cable, 2 - 1/2", 1 - 1/2" & 3/4" E	1 - 1/2"	25	103
TP440G ^{A F}	All	"VMS"	Welded	4 - cable, 2 - 1/2", 1 - 1/2" & 3/4" E	1 - 1/2"	25	103

^A UL approved for use with aluminum interlocking grounding metal-clad cable, Type MCIA (Southwire MCAP™).

MCAP™ is a registered trademark of Southwire Company.

^E TP catalog numbers ending in PF include ground screw with pigtail lead.

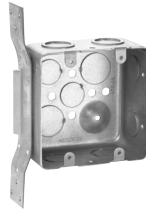
^F CSA certified. G indicates ground screw installed.

Steel square boxes

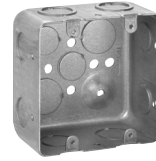
4" SQUARE TWO DEVICE BOXES – 30.3 CUBIC INCH CAPACITY

2 1/8" DEEP – FOR CONDUIT

UL LISTED



TP391



TP395

Cat. #	Bracket	Description	Grounding method	Knockouts		Unit qty.	Wt. lbs. per 100
				Sides	Bottom		
TP391	"VS", set 7/8"	Drawn	Ground bump	6 - 1/2", 3 - 3/4"	3 - 1/2", 2 - 3/4"	25	95
TP395	-	Drawn	Ground bump	8 - 1/2", 4 - 3/4"	3 - 1/2", 2 - 3/4"	25	84

4" SQUARE OUTLET BOXES – 50.0 CUBIC INCH CAPACITY

3 1/2" DEEP – FOR CONDUIT

UL LISTED, FILE NO. E-15022

Applications:

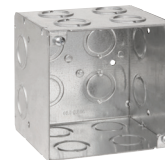
- 4" square, 3 1/2" deep outlet boxes are ideal for applications requiring increased capacity, including the installation of speaker boxes, fire alarms, strobes, security cameras and other oversized devices
- For use with rigid/IMC and EMT conduit



TP411



TP411RED



TP413



TP413RED

Cat. #	Bracket	Description	Grounding method	Knockouts		Unit qty.	Wt. lbs. per 100
				Sides	Bottom		
TP411 [Ⓢ]	"S"	Welded	Tapped hole	10 - 1/2" + 3/4" C	4 - 1/2" + 3/4" C	10	138
TP411RED [Ⓢ]	"S"	Welded	Tapped hole	10 - 1/2" + 3/4" C	4 - 1/2" + 3/4" C	10	145
TP413 [Ⓢ]	-	Welded	Ground bump	8 - 1/2" + 3/4" C, 4 - 3/4", 4 - 1"	2 - 1/2" + 2 - 3/4"	10	113
TP413RED [Ⓢ]	-	Welded	Ground bump	8 - 1/2" + 3/4" C, 4 - 3/4", 4 - 1"	2 - 1/2" + 2 - 3/4"	20	120

[Ⓢ]cUL Listed.

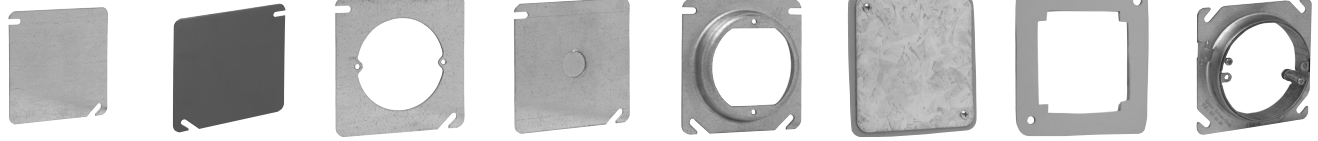
Steel boxes

Steel square covers

COVERS FOR 4" SQUARE BOXES – CUBIC INCH CAPACITY (SEE BELOW)

UL LISTED

#8-32 screw used on covers



TP472

TP472RED

TP474

TP478

TP473, TP475, TP476,
TP477, TP479, TP483

TP850^B

TP854^B

AMR0

Cat. #	Description	Unit qty.	Wt. lbs. per 100	Capacity cu. in.
TP472 ^H	Flat blank	50	31	-
TP472RED	Flat blank, red	50	31	-
TP474 ^H	Flat, open with ears 2 ³ / ₄ "	50	21	-
TP478 ^H	Flat, with 1/2" KO	50	31	-
TP478RED ^H	Flat, with 1/2" KO	50	31	-
TP487 ^H	Flat, with 3/4" KO	50	29	-
TP473 ^H	Raised 1/4", open with ears 2 ³ / ₄ "	50	23	1.3
TP476 ^H	Raised 1/2", open with ears 2 ³ / ₄ "	50	26	4.0
TP477 ^H	Raised 5/8", open with ears 2 ³ / ₄ "	50	27	5.0
TP475 ^H	Raised 3/4", open with ears 2 ³ / ₄ "	25	31	6.0
TP479 ^H	Raised 1", open with ears 2 ³ / ₄ "	25	34	7.0
TP483 ^{C H}	Raised 1 1/4", open with ears 2 ³ / ₄ "	25	31	9.5
AMR0 ^I	3/4" - 1 1/2" round adjustable mud ring	25	44	6.1

Air Plenum

TP850 ^B	Flat blank gasketed with captive screws	25	31	-
TP854 ^B	Flat ring double gasketed	25	12	-

^B For air plenum (no mounting holes) - not UL Listed.

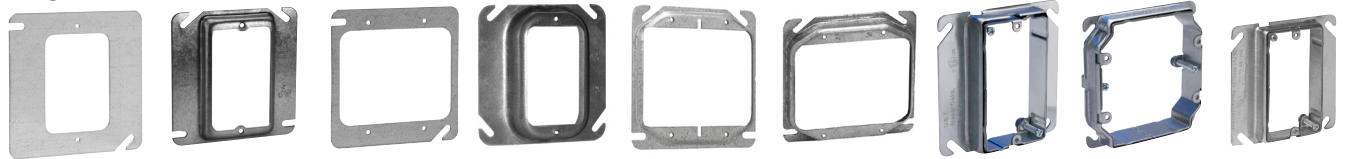
^C cUL Listed.

^I ETL listed.

^H CSA certified.

MUD RINGS FOR 4" SQUARE STEEL OUTLET BOXES

UL LISTED



TP480

TP482, TP484,
TP486, TP489

TP494

TP488, TP490

TP496

TP501, TP502

AMR1

AMR2

AMR158

Cat. #	Description	Unit qty.	Wt. lbs. per 100	Capacity cu. in.
One Device				
TP480 ^H	Flat	50	20	-
TP482 ^H	1/4" raised	50	21	1.8
TP484 ^H	1/2" raised	50	23	3.8
TP489 ^H	5/8" raised	50	26	4.3
TP489RED ^H	5/8" raised	50	26	4.3
TP486 ^H	3/4" raised	50	30	5.5
TP488 ^H	1" raised	50	34	6.8
TP490 ^H	1 1/4" raised	25	39	8.5
AMR1 ^C	3/4" - 1 1/2" raised adjustable	25	47	-
AMR158 ^C	5/8" - 1 1/4" raised adjustable	25	44	6.0
Two Device				
TP494 ^H	Flat	50	12	-
TP496 ^{H K}	1/4" raised	50	13	3.0
TP498 ^{H K}	1/2" raised	50	18	6.0
TP499 ^{H K}	5/8" raised	50	22	8.0
TP500 ^{H K}	3/4" raised	50	24	9.0
TP501 ^H	1 1/4" raised	25	31	14.0
TP502 ^H	1" raised	25	30	11.7
AMR2 ^C	5/8" - 1 1/2" raised adjustable	25	50	11.3

^C cUL Listed.

^H CSA certified.

^K Slotted design for use with 4" square box partitions.

Steel square covers

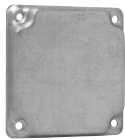
4" SQUARE SURFACE COVERS – 5.5 CUBIC INCH CAPACITY

RAISED 1/2"

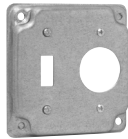
UL LISTED

CSA LISTED

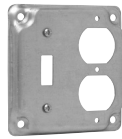
Screw(s) provided in raised cover kit are for use with the center hole on duplex receptacles. Nuts that are provided in kit are to be used in conjunction with the screws that are provided as standard packaging with devices to mount device to raised cover. For GFCI device installation, no screw is needed; please disregard.



TP503



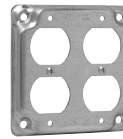
TP504



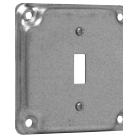
TP506



TP508



TP510



TP512



TP507, TP514,
TP519



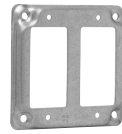
TP516



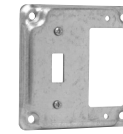
TP509 (4 screws),
TP518 (2 screws)



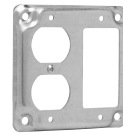
TP513



TP511



TP515



TP517

Cat. #	Description	Unit qty.	Wt. lbs. per 100
TP503	Raised blank	50	35
TP504	For one toggle switch and one single receptacle 1 ¹³ / ₃₂ " (1.406) dia.	50	31
TP506	For one toggle switch and one duplex receptacle	50	31
TP508	For two toggle switches	50	35
TP510	For two duplex receptacles	50	26
TP512	For one toggle switch	50	35
TP507	For one single receptacle 1 ¹⁹ / ₃₂ " (1.594) dia.	50	37
TP514	For one single receptacle 1 ¹³ / ₃₂ " (1.406) dia.	50	34
TP519	For one power outlet 1 ²³ / ₃₂ " (1.719) dia.	50	37
TP516	For one duplex receptacle	50	31
TP509	For one power outlet 2 ⁷ / ₁₆ " (2.438) dia.	50	23
TP518	For one power outlet 2 ³ / ₁₆ " (2.141) dia.	50	34
TP513	For one GFCI receptacle	50	31
TP511	For two GFCI receptacles	50	26
TP515	For one toggle switch and one GFCI receptacle	50	31
TP517	For one duplex receptacle and one GFCI receptacle	50	26

Steel boxes

Steel square covers

UNI-MOUNT™ COVERS

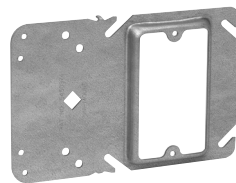
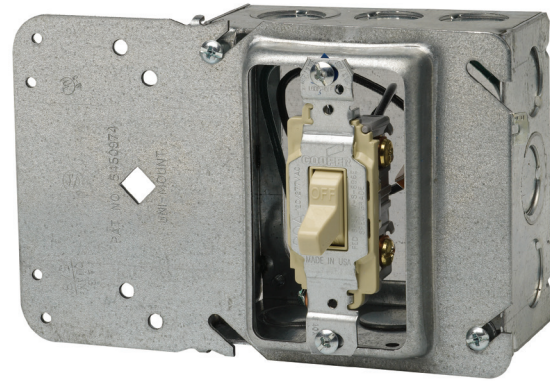
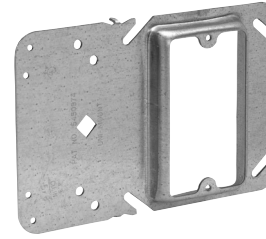
The Uni-Mount combines the features of a mounting device plate with those of a box support, giving you one universal plate for all of your needs. Specifically designed for use with metal or wood studs:

The new and improved version incorporates four small holes on the left side (support side) of the bracket. These holes allow for the attachment of box mounting brackets to allow for use of both sides of the stud. The holes are strategically located to accept either the Eaton's B-Line Series BB423 bracket or the Caddy H23 bracket. Additionally, the viewing hole has been significantly enlarged (and is now diamond shaped) to make it even easier to find mark lines on the stud.

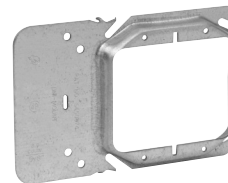
Features:

- Guide tabs ensure consistent alignment on stud
- Stud alignment hole ensures consistent mounting height
- Rigid bracket design eliminates the need for far side support
- Available as a single or two device cover
- Universal design fits all 4" square boxes
- Available in 1/2", 5/8" and 3/4" raised
- Can be ordered pre-assembled to popular 4" square boxes
- Fast and easy installation
- Can be used in multiple applications, resulting in less items to stock
- Less labor intensive
- Less material handling
- No multiple assemblies to handle
- Can be used in Class II communications outlets for low voltage without a box
- UL Listed and CSA certified^L
- UL File No. E-23156

^LCSA requires a far side support.



Single gang



Two gang

Steel boxes

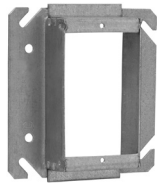
Cat. #	Description	Capacity cu. in.	Unit qty.	Wt. lbs. per 100
Single Gang				
TP30000	1/2" raised	3.8	50	43
TP31000	5/8" raised	4.3	50	46
TP32000	3/4" raised	5.5	50	50
Two Gang				
TP35000	1/2" raised	6.0	50	38
TP36000	5/8" raised	8.0	50	52
TP37000	3/4" raised	9.0	50	54
Low profile screws – reduces risk of sheetrock bulge				
TP710	L.P. screws	-	1000	0.5

Steel square covers

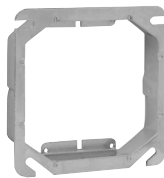
TILE WALL COVERS FOR 4" SQUARE BOXES – CUBIC INCH CAPACITY (SEE BELOW)

UL LISTED

CSA LISTED



TP524



TP534



TP540

Applications:

- Typically used with tile or brick

Features:

- Rounded corners help guide cuts around devices

Cat. #	Description	Capacity cu. in.	Unit qty.	Wt. lbs. per 100
One device				
TP520	1/2" raised	3.7	50	30
TP522	3/4" raised	5.5	50	36
TP524	1" raised	7.4	50	40
TP526	1 1/4" raised	9.3	25	46
TP528	1 1/2" raised	11.0	25	50
TP530	2" Raised	14.8	25	62
Two device				
TP532	1/2" raised	5.0	10	24
TP534	3/4" raised	7.8	10	30
TP536	1" raised	10.3	10	36
TP538	1 1/4" raised	13.0	10	44
TP540	1 1/2" raised	15.5	10	50
TP542	2" raised	20.8	10	66

Steel boxes

4" SQUARE BOX PARTITIONS



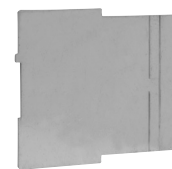
TP860



TP861



TP862



TP863

Cat. #	Description	Unit qty.	Wt. lbs. per 100
For 1 1/2" deep box with square cut tile wall two gang covers			
TP860	For 1/2", 3/4", 1" raised covers	25	13
TP861	For 1 1/4", 1 1/2", 2" raised covers	25	18
For 2 1/8" deep box with square cut tile wall two gang covers			
TP862	For 1/2", 3/4", 1" raised covers	25	16
TP863	For 1 1/4", 1 1/2", 2" raised covers	25	21